



# METAZA MPX-95

Roland METAZAStudio



Specifications		
Imprintable material	Gold, silver, copper, platinum, brass, aluminum, iron, stainless steel, etc. (Vickers hardness [HV] of the imprint surface must be 200 or less.)	
Loadable material size	Using a base table + base plate : Max. 100 mm (W) × 200 mm (L) × 40 mm (H) (3.9 in. × 7.9 in. × 1.6 in.) or 200 mm (W) × 100 mm (L) × 40 mm (H) (7.9 in. × 3.9 in. × 1.6 in.) Using a base plate only : Max. 100 mm (W) × 200 mm (L) × 70 mm (H) (3.9 in. × 7.9 in. × 2.8 in.) or 200 mm (W) × 100 mm (L) × 70 mm (H) (7.9 in. × 3.9 in. × 2.8 in.) *The above are for when the cover is closed. When the cover is open, there is no limit on how large the material can be, but the imprint area of the material must be placed within the imprint area.	
Imprint area	Maximum Imprintable Area	80 mm (W) × 80 mm (D) × 70 mm (H) (3.2 in. × 3.2 in. × 2.8 in.)
	Recommended imprint area	50 mm (W) × 50 mm (D) × 70 mm (H) (2.0 in. × 2.0 in. × 2.8 in.)
Resolution	529 dpi (High resolution), 353 dpi (Photo), 265 dpi (Text), 1058 dpi (Vector)	
Imprint direction	Unidirectional imprinting or bidirectional imprinting (Selectable with Windows driver)	
Imprint speed (Default)	50 mm/sec (2.0 in./sec) (Photo), 33 mm/sec (1.2 in./sec) (High resolution/Text), 24 mm/sec (0.94 in./sec) (Vector)	
Interface	USB	
Power requirements	Dedicated AC adapter	AC 100 to 240 V ±10%, 50/60 Hz
	Main unit	DC 19 V, 1.2 A
Power consumption	Approx. 21 W	
Operating noise	70 dB (A) or less	
Operating temperature	10 to 30 °C (50 to 86 °F)	
Operating humidity	35 to 80 % (no condensation)	
External dimensions	286 mm (W) × 383 mm (D) × 308 mm (H) (11.3 in. (W) × 15.1 in. (D) × 12.2 in. (H))	
Weight	12 kg (26.5 lb.)	
Included items	AC adapter, power cord, test-use material, USB cable, Roland Software Package CD-ROM, user's manual, etc.	

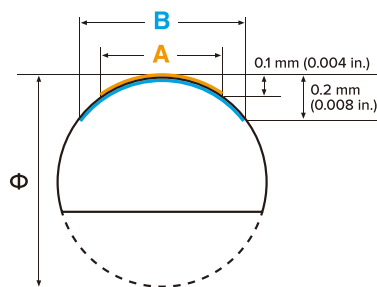
System Requirements for USB Connection	
Computer	Model preinstalled with Windows 10, 8.1, or 7 (32- or 64-bit), or upgraded computer originally preinstalled with Windows 7 or later
USB cable	Use the included USB cable.

Options		
	Model	Description
Gift Kit	GK-1	Center vise × 1 pce., Movable center vise × 1 pce., Head caps (round bottom) × 30 pcs., Clamp pins (4 pcs. × large, 4 pcs. × small) etc.
Head unit and head caps for replacement	MPH-90	Head unit × 1 and head caps × 4 pcs.
Replacement head caps for round surfaces	CAP-HEAD MPX-90	5 pcs.
Replacement durable head caps for flat surfaces	DURABLE HEAD-CAP MPX, FLAT SURFACE	5 pcs.

### Conditions when imprinting curved surfaces

Choose material when imprinting on a curved surface taking into consideration the following limitations. These figures show the imprinting area possible for a curved surface and the area that the marking pin can reach with respect to the diameter of the cylinder when the head cap (CAP-HEAD MPX-90) is attached to the head unit. However, these limitations do not assure the quality of the photographic image.

Diameter of cylinder with extended curved surface (φ)	Recommended Imprint area (A)	Area reached by the marking pins (B)
10 mm (0.4 in.)	2.0 mm (0.08 in.)	2.8 mm (0.11 in.)
20 mm (0.8 in.)	2.8 mm (0.11 in.)	4.0 mm (0.16 in.)
30 mm (1.2 in.)	3.4 mm (0.14 in.)	4.8 mm (0.19 in.)



Metal Printer

# METAZA

## MPX-95

Roland DG reserves the right to make changes in specifications, materials or accessories without notice. Actual output may vary. For optimum output quality, periodic maintenance to critical components may be required. Please contact your Roland DG dealer for details. No guarantee or warranty is implied other than expressly stated. Roland DG shall not be liable for any incidental or consequential damages, whether foreseeable or not, caused by defects in such products. Reproduction or use of copyrighted material is governed by local, national, and international laws. Customers are responsible for observing all applicable laws and are liable for any infringement. All trademarks are the property of their respective owners. Roland DG Corporation has licensed the MMP technology from the TPL Group.

Imagine. Roland

AUTHORIZED DEALER:

Printed in Japan. RDG-416108199 16 OCT C-3 D-S

[www.rolanddg.com](http://www.rolanddg.com)





# MAKE YOUR MARK

Make it personal with your own text and illustrations



Make it unique with your own photos and images



Make it exclusive by adding text and illustrations to a large variety of metals



Make it memorable by imprinting on large and curved items



Make it stand out with ultra-fine text and logos

## Create unique, high-value gifts through personalization.

Quickly customize hundreds of metal items with photos, logos and personalized text. Perfect for kiosks, gift shops, retail stores and industrial applications, the new METAZA MPX-95 photo impact printer is a low-cost, easy-to-operate device that anyone can use to personalize high-value items, making them even more unique and profitable.

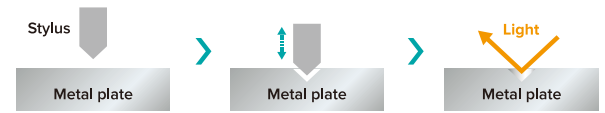
### METAZA MPX-95



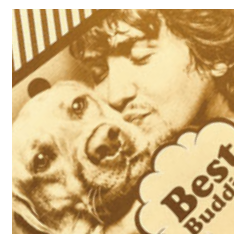
### Quality

#### No Mess, No Hassle, High-Value Customization

Personalizing flat or curved surfaces of high-value materials like gold, silver, platinum, stainless steel and titanium has never been so easy. With no metal dust, no mess and no complicated operation, the MPX-95 is a machine that imprints fast and efficiently, and produces photo-realistic results.



The MPX-95 uses a durable diamond-tipped stylus that strikes the material with high speed and precision to reproduce the most delicate gradations and finest fonts. The results are exceptional, with detailed graphics and fonts that stand out.



### Versatility

#### Removable Base for Expanded Material Sizes

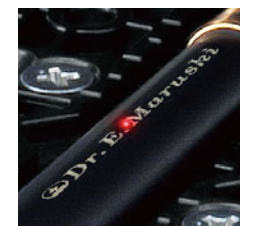
Users can expand the MPX-95's profit-making potential by simply unclipping two hook fasteners. In seconds, the base of the MPX-95 can be removed to enable it to imprint onto large and unique items such as golf clubs, metal vases, urns and more.



The MPX-95 further expands personalization possibilities with an optional Gift Kit of accessories.

#### Instantly Set-Up with a Touch-Button Laser Pointer

A built-in laser pointer instantly defines the origin point on media before imprinting for accurate personalization.

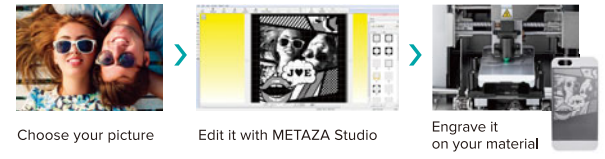


### Easy-to-use

#### Easy-to-Use Software Included

The MPX-95 operates as easily as a desktop printer. Simply import text or images, layout and edit your graphics, and print. The following bundled software enables production right out of the box:

#### Roland METAZAStudio



#### Compact, Quiet and Portable

The MPX-95 photo impact printer runs quietly, cleanly and safely in any gift shop, retail store, kiosk or manufacturing environment. As a compact and portable device, it can be taken anywhere and used to produce souvenirs at weddings, craft fairs, pet shows and other special events.